

Linear measuring technology

Draw-wire encoder A30	Compact-Line	Measuring length max. 0.6 m
------------------------------	---------------------	------------------------------------



The draw-wire mechanics A30 with analog output stands out with its miniaturized design. It is available with potentiometer, voltage or current output.



Analog output



Wide temperature range



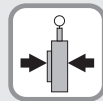
High protection level



Reverse polarity protection



Easy mounting



Compact design

Miniaturized and simple

- Measuring length up to 600 mm.
- For applications with a low traversing speed.
- Easy to install.
- Housing of reinforced plastic.

Order code **D5.350X.AXXX.0000**
draw-wire encoder Type **a** **b** **c**

a Measuring range
 A = 300 mm¹⁾
 B = 600 mm

b Output circuit
 11 = analog output 4 ... 20 mA
 22 = analog output 0 ... 10 V DC
 supply voltage 15 ... 28 V DC
 33 = potentiometer output 10 kΩ

c Type of connection
 4 = radial cable, 0.5 m [1.64']

Accessories for draw-wire encoder Dimensions in mm [inch]

Order no.

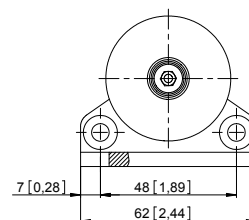
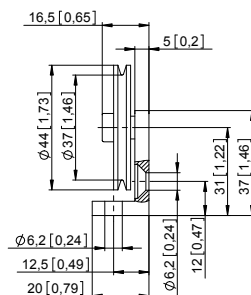
Guide pulley



Technical data:
 - mounting bracket (anodized alum.)
 - guide pulley (plastic POM)
 - ball bearing (type 696-2R5)

Scope of delivery:
 - 2 x countersunk screws
 for lateral fixing
 - 2 x hexagonal screws
 for fixing on a flat surface

8.0000.7000.0045



1) Not suitable for potentiometer output / order code **b** output circuit = 33.

Linear measuring technology

Draw-wire encoder A30	Compact-Line	Measuring length max. 0.6 m
------------------------------	---------------------	------------------------------------

Technical data

Mechanical characteristics (draw-wire mechanics)	
Speed max.	0.8 m/s
Acceleration max.	32.3 m/s ²
Working temperature	-10 °C ... +80 °C [+14 °F ... +176 °F]
Protection acc. to EN 60529	IP50
Weight	approx. 60 g [2.12 oz]
Extension force F_{min}	3 N
Repeat accuracy	±0.15 mm
Linearity	±0.35 %
Material	<div style="display: flex; align-items: flex-start;"> <div style="margin-right: 10px;">housing</div> <div>plastic</div> </div> <div style="display: flex; align-items: flex-start;"> <div style="margin-right: 10px;">wire</div> <div>stainless-steel \varnothing 0.4 mm</div> </div> <div style="display: flex; align-items: flex-start;"> <div style="margin-right: 10px;"></div> <div>plastic-coated</div> </div>

Approvals		
CE compliant in accordance with		
EMC Directive		2014/30/EU
RoHS Directive		2011/65/EU

Electrical characteristics			
Analog output	0 ... 10 V DC	4 ... 20 mA	potentiometer 10 k Ω
Supply voltage	15 ... 28 V DC	–	–
Operating range	–	15 ... 28 V DC	max. 48 V DC
Max. load current	15 mA	–	–
Load	–	max. 500 Ω	–

Terminal assignment (analog output)

Analog sensor A11 (4 ... 20 mA)			R/I converter				
		Signal:	+V	I_{out}	n.c.		
	Cable	Core color:	BN	WH	GN		
Analog sensor A22 (0 ... 10 V DC)			R/U converter				
		Signal:	+V	0 V	U_{out}		
	Cable	Core color:	BN	WH	GN		
Analog sensor A33 (Potentiometer 10 k Ω)			Potentiometer				
		Signal:	+V	0 V	Out		
	Cable	Core color:	BN	WH	GN		

Linear measuring technology

Draw-wire encoder A30

Compact-Line

Measuring length max. 0.6 m

Dimensions

Dimensions in mm [inch]

