

# Open Frame LCD

## Bar-type (16:3) Open Frame LCD

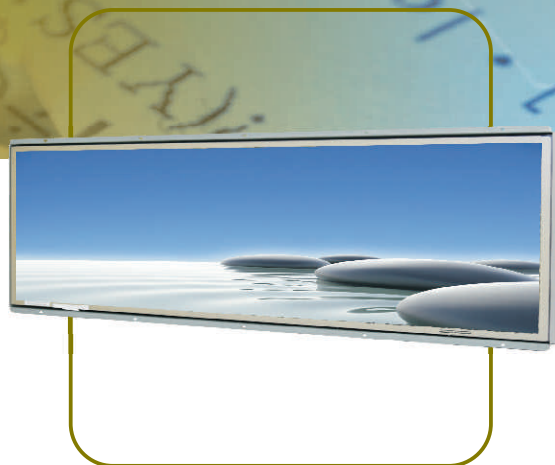
### 19" Wide (16:3)

#### Specifications



Model Name	W19L100-OFA1
Viewable Size Image	19" Wide (16:3)
Active Display Area(mm)	473.76(H) x 96.44(V)
Pixel Pitch(mm)	0.282(H) x 0.282(V)
Number of Pixels	1680 x 342
Contrast Ratio	2000:1(typ.)
Display Color	16.7M
Brightness(cd/m <sup>2</sup> )	300(typ.)
Viewing Angle(CR>=10)	-89~89(H);-89~89(V)
Lamp Life(hrs)	50000
Synchronization Range	31.5~60.0KHz/60~75Hz
Horizontal/Vertical	
Recommended Resolution	1680 x 342@ 60Hz
Signal Connector	15 pin D-Sub
Power Source	12V DC in, with External AC to DC Adapter (100~240V AC)
Power Consumption	36W typical, normal operation
Power Management	VESA DPMS Compliant
Plug & Play	VESA DDC 1/2B
Operating Temperature	0°C~50°C
Storage Temperature	-20°C~60°C
Humidity	5~95%
Optional Video Input	No
Optional DVI Input	Yes
Optional Touch Screen	No

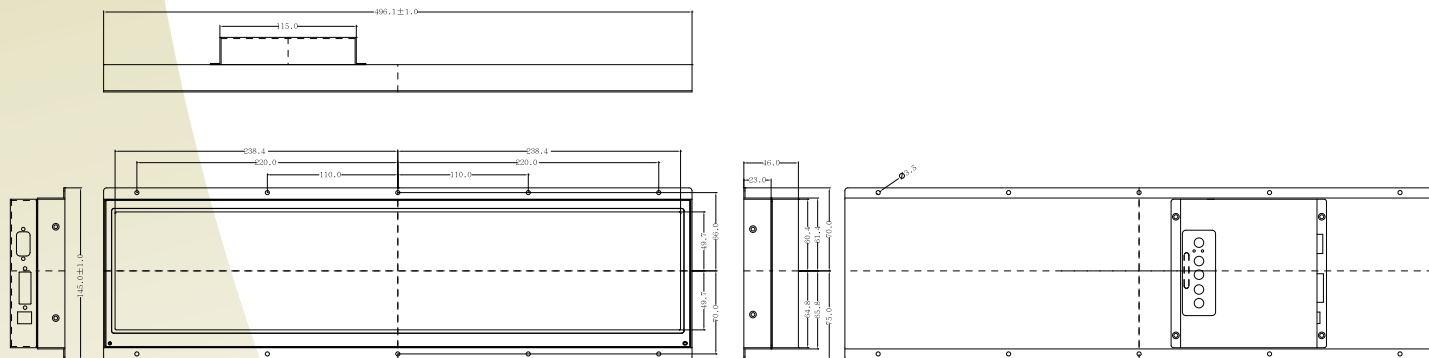
Remarks:W19L300 series= VGA / DVI input



#### Accessories

VGA cable	D-sub 15 pin male to male	✓
DVI cable	24 pin male to male	✓
User Manual	User guide	✓
User adapter	12V power adapter	✓

#### Mechanical Drawing:W19L100-OFA1



\* Note: this is a simplified drawing and some components are not marked in detail. Please contact our sales representative if you need further product information.

Rev.	Reasons	Revised Date
1.1	Drawing change	July-29-11
1.2	Spec Change	Nov-14-12
1.3	Pic Change	Jun-03-13

# Open Frame LCD

## Bar-type Open Frame LCD

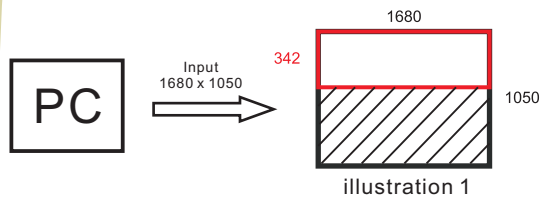
### Order Information

Model name	I/O	Type	Touch
W19L300	VGA + DVI	Open frame	N/A

### Resolution: 1680 x 342

Winmate's special designed AD Board is capable of driving the very narrow panel with a standard resolution of 1680x1050, but display only the top third of the desktop height.

- \* Although the panel resolution is 1680 x 342, please input 1680 x 1050 format signal to it.



Resolution: 1680 x 342 (at 1:1 mode)



### Application



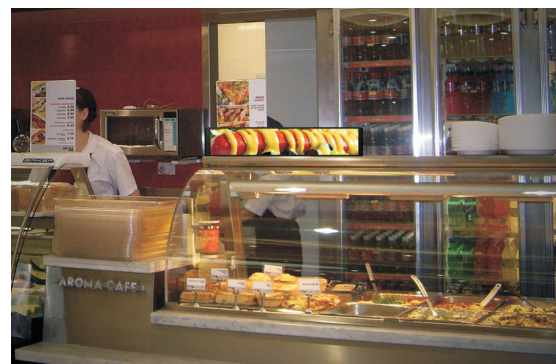
Restaurant



Hotel Lobby



Department Store



Retail Store