

# OCS

## *Operator Control Station*

### XL Series OCS

The industry leader in all-in-one control



# Discover the advantages of OCS...

By combining a controller, operator interface, I/O and networking into a single compact unit, OCS (Operator Control Station) provides a better solution for original equipment manufacturers, integrators and end-users alike. More and more, there is a move to all-in-one controllers because of ease of use, cost savings and flexibility.

Since 1998, OCS has led the way in this emerging market with the largest installed base and product selection ranging from small text based screens to large colour touchscreens. OCS has been used successfully in a variety of applications, including:

- Custom OEM products
- Power Management and Backup Generation
- Semiconductor Applications
- Packaging Machinery
- Water Treatment
- Compressor Control
- Pump Control
- Food Processing
- Motion Control
- Distributed Conveyor Control
- HVAC/Environmental Control
- Mobile Machinery
- Automotive Parts Manufacturing
- Renewable Energy
- Building Controls
- Energy Monitoring and Control

## Lowers costs, more options and easy to use

OCS applications are developed with a powerful and secure programming package called Cscape™. It supports logic programming, operator interface development, I/O configuration and network configuration in a single software package.

Offering many security features, users can be required to enter passwords to access protected operations (such as upload, download, verify and controller mode).

Cscape™ can be downloaded free: [www.horner-apg.com](http://www.horner-apg.com)

It has no costly licensing fees so you don't have to pay for software upgrades. With fully integrated hardware and software, OCS offers easier programming, installation, development and set-up.

You can also save time and money with an OCS because less panel space is needed. It is designed as a modular system for easy selection and growth and it has embedded CAN, ethernet and Modbus RTU networking capabilities.



# Customise the OCS to your specific needs

OCS is designed to look like a “generic” operator station, fitting in with most cabinet and console designs and colour schemes. But sometimes adding an individualised look can make a world of difference in the overall usefulness of an operator station and the marketing of your machine or system.

**You can customise an off the shelf OCS in many inexpensive ways to give you this advantage:**

- Apply a label on the overlay to add your company logo
- Substitute a custom keypad or overlay with your company’s logo, colours and industry terms - our advanced manufacturing techniques make this available to low and high volume users alike
- Program the OCS to operate in several languages, such as English, French, German, Spanish, Italian and more via our easy to use multi-language feature

**We can also provide more extensive customisation such as:**

- Modifying existing I/O modules
- Designing new I/O configurations and control functions
- Adding protocol or communication options
- Designing a custom control station from the ground up



## Product support is as important as the product itself

### World wide support

Replacement parts and support are available from local Horner offices and our network of OCS resellers located all over the world.

### Technical support and FREE training

You can come to us or our partners for technical or product support for OCS.

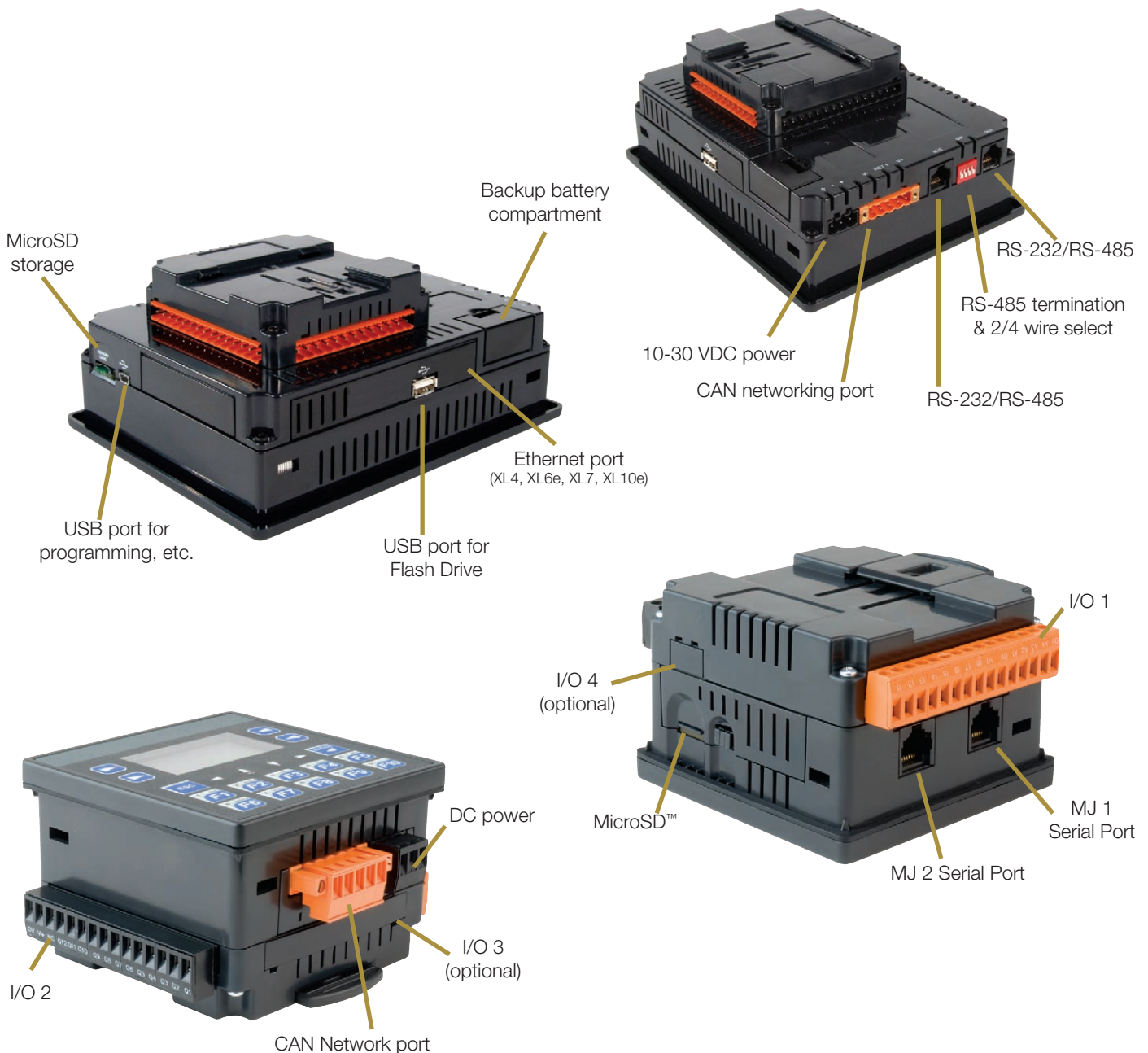
Whether it’s a quick phone call or online information, many OCS services are available at no charge.

Engineering services such as programming assistance, packaged solutions and site surveys can be provided at low cost:

- Web site for comprehensive product information, application examples, sample programmes, training guides and manuals - [www.horner-apg.com](http://www.horner-apg.com)
- Free OCS training classes
- 2 year warranty
- Network of worldwide Sales Associates for parts, service or support
- Online helpdesk
- Free download of software updates

# XL Series Hardware at a glance

|                         | Built-in I/O, expandable | Display Size | Touchscreen | Logic Size | MicroSD™ Memory, Datalog | USB | Serial Port | Built-in Ethernet | CAN Port |
|-------------------------|--------------------------|--------------|-------------|------------|--------------------------|-----|-------------|-------------------|----------|
| <b>XL<sub>e</sub></b>   | ✓                        | 2.25" mono   | ✗           | 256kB      | ✓                        | ✗   | ✓           | ✗                 | ✓        |
| <b>XL<sub>t</sub></b>   | ✓                        | 3.5" mono    | ✓           | 256kB      | ✓                        | ✗   | ✓           | ✗                 | ✓        |
| <b>XL<sub>4</sub></b>   | ✓                        | 3.5" colour  | ✓           | 1MB        | ✓                        | ✓   | ✓           | ✓                 | ✓        |
| <b>XL<sub>6</sub></b>   | ✓                        | 5.7" colour  | ✓           | 256kB      | ✓                        | ✓   | ✓           | ✗                 | ✓        |
| <b>XL<sub>6e</sub></b>  | ✓                        | 5.7" colour  | ✓           | 256kB      | ✓                        | ✓   | ✓           | ✓                 | ✓        |
| <b>XL<sub>7</sub></b>   | ✓                        | 7.0" colour  | ✓           | 1MB        | ✓                        | ✓   | ✓           | ✓(2)              | ✓(2)     |
| <b>XL<sub>10e</sub></b> | ✓                        | 10.4" colour | ✓           | 256kB      | ✓                        | ✓   | ✓           | ✓                 | ✓        |



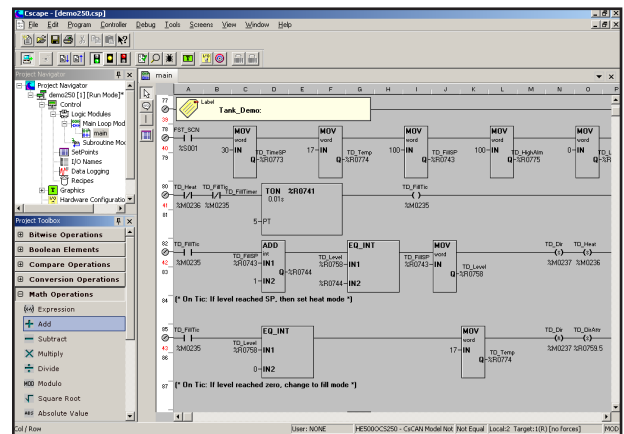


# Software ties it all together!

## Cscape™...exceptional software

Cscape™ software combines graphical ladder diagram programming (based on IEC-61131) with operator interface development to completely integrate the control package. Its straightforward approach to programming combines logic with messaging and networking and offers:

- All IEC 61131 programming languages (LD, ST, IL, FBD, SFC)
- Floating point math
- Motion commands
- Serial read and write functions
- Auto tune PID
- Modem and networking functions

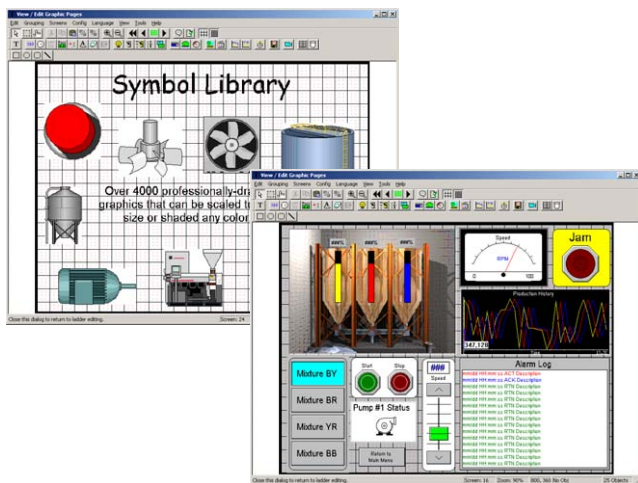


### Logic

Cscape™ features a powerful IEC-61131 style free form, drag and drop editor. Nearly 100 functions to choose from, including conversion, string handling, advanced math, flow control and more.

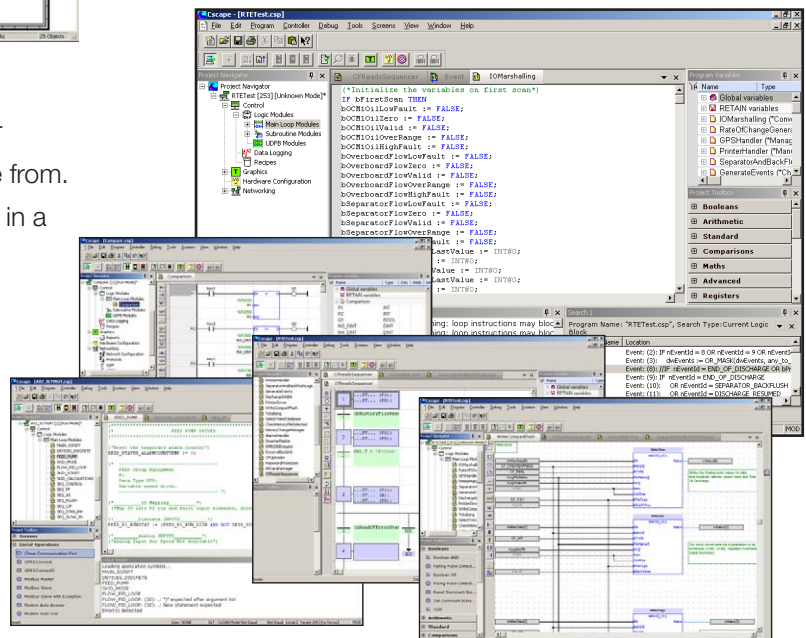
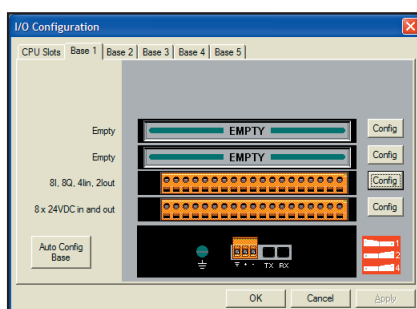
### Operator interface

Designed to simplify development of your operator interface screens while you develop your control logic. Screens can be called up from logic or operate independently. Use a single set of I/O references—no duplication of effort.



### I/O configuration

Configure all your I/O from Cscape™ manually or automatically - with many I/O modules to choose from. Built-in expansion and remote I/O are all handled in a straightforward manner.



# All the networking options you need... ...in a single product!

- Flexible, easy to use CsCAN Network
- Connect to Industrial Networks: CANOpen, ModBus TCP/IP, Ethercat, Profibus, Devicenet, SAE J1939, BACnet and Modbus RTU
- Versatile serial ports with downloadable drivers for connection to many PLC's, Drives, Serial Devices and I/O
- Web connectivity via inbuilt GPRS or Ethernet, send Email with attachments, Web and FTP server, push Data to Cloud and much more
- Send and Receive SMS with embedded data
- Datalog to MicroSD or USB Drive
- Video Input via USB
- Optional inbuilt GPRS Modem
- GPS Support
- Remote Programming and Control over a variety of media



# EnvisionRV - remotely... view, monitor, control and update

## Access your OCS at your PC

With EnvisionRV, graphical objects look and behave the same on the PC as they do on the OCS. This feature reduces your training costs, and can significantly speed up your implementation by using the familiar configuration tool Cscape™ to develop OCS screens or screens specifically for the PC.

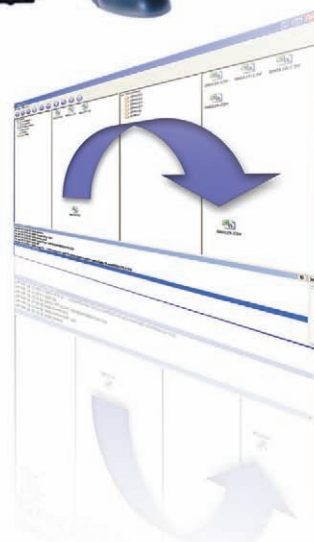


- View and interact with Horner OCS controllers. Remote access to unit's screens, alarms and any graphical objects
- Easy to use - intuitive interface, simple configuration and two display modes (synchronous & asynchronous)
- Single point of connection. Monitor several units on the network by connecting to just one unit



## Transfer files with EnvisionFX

EnvisionFX enables you to transfer files between your PC and OCS via a graphical interface.





# I/O and Communications Selection Guide

XL6, XL7 & XL10



XLt

XLe

Fixed I/O - factory fitted inside XL units

### XL Series I/O (built in) XLe, Xt and XL6 models

|         | DC In | DC Out Pos | Relay Out | HSC In | PWM Out | mAV In | mAV/RTD/TC | mAV Out |
|---------|-------|------------|-----------|--------|---------|--------|------------|---------|
| Model 0 | -     | -          | -         | -      | -       | -      | -          | -       |
| Model 2 | 12    | -          | 6         | 4      | -       | 4      | -          | -       |
| Model 3 | 12    | 12         | -         | 4      | 2       | 2      | -          | -       |
| Model 4 | 24    | 16         | -         | 4      | 2       | 2      | -          | -       |
| Model 5 | 12    | 12         | -         | 4      | 2       | -      | 2          | 2       |

### Model Selection

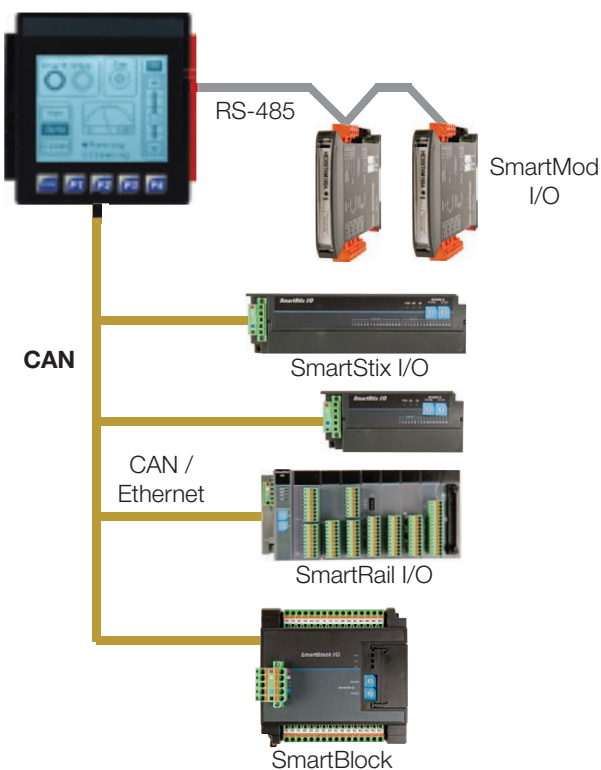
| XLe     | XLt     | XL4     | XL6     | XL6e    | XL7     | XL10e   |
|---------|---------|---------|---------|---------|---------|---------|
| HEXE220 | HEXT240 | HEXT251 | HEXT350 | HEXT351 | HEXT391 | HEXT501 |

|              | Model 0 | Model 2 | Model 3 | Model 4 | Model 5 |
|--------------|---------|---------|---------|---------|---------|
| No CAN (XLe) | C000    | C012    | C013    | C014    | C015    |
| CsCAN        | C100    | C112    | C113    | C114    | C115    |
| CANOpen      | C200    | C212    | C213    | C214    | C215    |
| Devicenet    | C400    | C412    | C413    | C414    | C415    |
| J1939        | C500    | C512    | C513    | C514    | C515    |

**Note:**

XLe, Model 2, CsCAN Full Part Number HEXEC220C112  
 XLe, Model 2, CANOpen Full Part Number HEXEC220C212

No Can is only available on Xle  
 Devicenet is not available for Xle  
 XL7 has two Ports, Cscan on Port 1, Port 2 Selectable



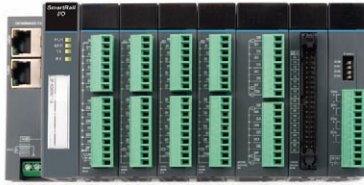
### Plug in communications and I/O options

#### XL series communications - field installable

|            | Description                         |
|------------|-------------------------------------|
| HE-XEC     | Ethernet Communications option card |
| HE-XMC     | 57.6k Telephone Modem option card   |
| HE-GSM04   | Quad-Band GSM / GPRS Modem          |
| HE-GPS183  | GPS Satellite Receiver              |
| HE-PBS     | Profibus Slave Module               |
| HE-XDAC007 | 2-channel Analog Out (mA/V)         |
| HE-XDAC107 | 4-channel Analog Out (mA/V)         |
| HE-XHSQ    | 24V Dual High Speed Output          |
| HE-XHSQ-5  | 5V VDC Dual High Speed Output       |



# I/O and Communications Selection Guide



SmartRail™ Remote I/O - adds I/O using CSCAN, CANOpen, Ethernet



SmartStix™ remote I/O - add I/O to any unit using CsCAN



SmartBlock™ Remote I/O - add I/O to any unit using CSCAN



SmartMod™ add remote I/O to any unit using Modbus

## SmartRail

|             | DC In   | DC Out | Relay Form A | mA/V In | V Out                | mA Out | RTD In | T/C In |
|-------------|---|--------|--------------|---------|----------------------|--------|--------|--------|
| HE599DIM510 | 8   |        |              |         |                      |        |        |        |
| HE599DIM610 | 16  |        |              |         |                      |        |        |        |
| HE599DIM710 | 32  |        |              |         |                      |        |        |        |
| HE599DQM506 |   | 8      |              |         |                      |        |        |        |
| HE599DQM606 |   | 16     |              |         |                      |        |        |        |
| HE599DQM706 |   | 32     |              |         |                      |        |        |        |
| HE599DQM502 |   |        | 8            |         |                      |        |        |        |
| HE599DQM602 |   |        | 16           |         |                      |        |        |        |
| HE599DIQ512 | 8   |        | 8            |         |                      |        |        |        |
| HE599ADC170 |   |        |              | 4       |                      |        |        |        |
| HE599DAC101 |   |        |              |         | 4                    |        |        |        |
| HE599DAC106 |   |        |              |         |                      | 4      |        |        |
| HE599MIX116 |   |        |              | 2       | 2 Selectable V or mA |        |        |        |
| HE599RTD100 |   |        |              |         |                      |        | 4      |        |
| HE599THM100 |   |        |              |         |                      |        |        | 4      |
| HE599C0S100 | CANOpen Base; 8 modules/base, 16 base/system max  |        |              |         |                      |        |        |        |
| HE599CNX100 | CsCAN Base; 8 modules/base, 16 base/system max    |        |              |         |                      |        |        |        |
| HE599ETX200 | Ethernet Base; 8 modules/base, 16 base/system max |        |              |         |                      |        |        |        |

## SmartStix digital & analogue I/O

|             | DC In | DC Out | DC Out Pos | DC Out Neg | Relay Out | mA/V In | mA/V Out |
|-------------|-------|--------|------------|------------|-----------|---------|----------|
| HE559DIM610 | 16    |        |            |            |           |         |          |
| HE559DIM710 | 32    |        |            |            |           |         |          |
| HE559DQM606 |       | 16     |            |            |           |         |          |
| HE559DQM706 |       | 32     |            |            |           |         |          |
| HE559DQM602 |       |        |            |            | 16        |         |          |
| HE559DIQ816 | 16    | 16     |            |            |           |         |          |
| HE559DAC207 |       |        |            |            |           |         | 8        |
| HE559ADC970 |       |        |            |            |           | 12      |          |
| HE559MIX577 |       |        |            |            |           | 4       | 2        |
| HE559MIX977 |       |        |            |            |           | 8       | 4        |

## SmartBlock

|             | DC In                        | DC Out | mA/V In | mA/V Out | Relay | mA/V RTD/TC | RTD In | Tcpl/MV In |
|-------------|------------------------------|--------|---------|----------|-------|-------------|--------|------------|
| HE579DAC107 |                              |        |         | 4        |       |             |        |            |
| HE579DAC207 |                              |        |         | 8        |       |             |        |            |
| HE579MIX102 | 12                           |        | 4       |          | 6     |             |        |            |
| HE579MIX105 | 12                           | 12     |         | 2        |       | 2           |        |            |
| HE579MIX577 |                              |        | 4       | 2        |       |             |        |            |
| HE579MIX977 |                              |        | 8       | 4        |       |             |        |            |
| HE579RTD100 |                              |        |         |          |       |             | 4      |            |
| HE579RTD200 |                              |        |         |          |       |             | 8      |            |
| HE579THM100 |                              |        |         |          |       |             |        | 4          |
| HE579THM200 |                              |        |         |          |       |             |        | 8          |
| HE579ACM300 | AC Power Monitor - 3CT & 3PT |        |         |          |       |             |        |            |
| HE579ADC570 | 6 mA/V Thermistor In         |        |         |          |       |             |        |            |
| HE579ADC970 | 12 mA/V Thermistor In        |        |         |          |       |             |        |            |

## SmartMod digital & analogue I/O

|                 | DC In (Neg) | Relay Out | mA In | V In | mA/V Out | T/C | RTD |
|-----------------|-------------|-----------|-------|------|----------|-----|-----|
| HE359DIM610     | 12          |           |       |      |          |     |     |
| HE359DIQ512     | 4           | 4         |       |      |          |     |     |
| HE359ADC120/220 |             |           | 4/8   |      |          |     |     |
| HE359ADC107/207 |             |           |       | 4/8  |          |     |     |
| HE359DAC201     |             |           |       | 8    |          |     |     |
| HE359DAC007     |             |           |       |      | 2        |     |     |
| HE359DAC107     |             |           |       |      | 4        |     |     |
| HE359THM100/200 |             |           |       |      |          | 4/8 |     |
| HE359RTD100     |             |           |       |      |          |     | 4   |

# Choose the level of functionality you need



|  |  | XLe  | XLt                   | XL4   |
|--|--|--|-----------------------|---|
| Display                                      | Characters/Pixels  | 128 x 64   | 160 x 128             | 320 x 240                                       |
|  | Display Technology   | backlit LCD  | 3.5" transfective LCD | 3.5" TFT, 65000 colours                         |
|  | Character Height (mm)  | selectable fonts   |                       | selectable fonts                                |
|  | Number of Pages  | 1023   |                       | 1023  |
|  | Fields or Objects per Page                                       | 50   |                       | 1023  |
| Keypad/<br>Touchscreen                       | Total Keys   | 20   | 5                     | 5   |
|  | Function Keys  | 10   | 4                     | 4   |
|  | Numeric Keys   | shared   | pop-up keypad         | pop-up keypad                                   |
|  | OEM Faceplate Available  | yes  |                       | yes   |
| Controller                                   | Ladder Logic Memory  | 256kB  |                       | 1MB   |
|  | Register Memory  | 32kB   |                       | 32kB  |
|  | Logic Scan Rate  | 1.2ms/k  |                       | 0.013ms/k                                       |
|  | Removable Memory   | microSD (Transflash)   |                       | microSD (Transflash)                            |
|  | Local Comment Storage  | yes  |                       | yes   |
|  | Floating Point Support   | yes  |                       | yes   |
|  | AutoTune PID Capable   | yes  |                       | yes   |
|  | Motion Commands  | yes  |                       | yes   |
| Removable Flash Drive Support                | no   |  | yes                   |   |
| Input/Output<br>Support                      | Built-in I/O   | yes  |                       | yes   |
|  | SmartStix™, SmartRail™,<br>SmartBlock™, SmartMod™<br>I/O Support | yes  |                       | yes   |
|  | Digital Inputs/Outputs   | 2048/2048  |                       | 2048/2048                                       |
|  | Analogue Inputs/Outputs  | 512/512  |                       | 512/512   |
|  | General Purpose Registers  | 9999   |                       | 49999   |
|  | General Purpose Internal Bits                                    | 4096   |                       | 32,768  |
| Serial<br>Communications                     | Total Active Ports   | 2  |                       | 2   |
|  | RS-232 Ports/RS-485 Ports  | each port RS-232 or RS-485   |                       | 1 RS-232 & 1 RS-485 on Single RJ45 Jack         |
|  | PLC/Drive Protocols  | yes  |                       | yes   |
|  | RTU/Modbus Master/Slave  | yes  |                       | yes   |
|  | Serial ASCII In/Out  | yes  |                       | yes   |
|  | USB A and Mini B   | no   |                       | yes   |
| Networking                                   | Integrated CAN (CsCAN or<br>CANopen) Network                     | standard   |                       | standard  |
|  | Maximum CsCAN Distance   | 1800m  |                       | 1800m   |
|  | Programming Over Network   | yes  |                       | yes   |
|  | Peer-to-Peer Messaging   | yes  |                       | yes   |
| Ethernet/Internet                            | Ethernet Support   | HE-XEC   |                       | standard  |
|  | Remote Access  | via EnvisionRV   |                       | HTTP or EnvisionRV                              |
|  | Remote File Access   | via EnvisionFX   |                       | FTP or EnvisionFX                               |
| Physical<br>Specifications                   | Height, mm (inches)  | 96mm (3.780")  |                       | 96mm (3.780")                                   |
|  | Width, mm (inches)   | 96mm (3.780")  |                       | 96mm (3.780")                                   |
|  | Depth, mm (inches)   | 57.5mm (2.264")  |                       | 57.5mm (2.264")                                 |
|  | I/O Module Depth   | Communications Option adds<br>13mm (0.5") depth  |                       | Communications Option adds<br>13mm (0.5") depth |
| Operating<br>Specifications<br>and Standards | Operating Temperature  | 0 to 50°C  | -10 to 60°C           | -10 to 60°C                                     |
|  | Humidity (non-condensing)  | 5 to 95% non-condensing  |                       |   |
|  | Product Certifications   | XLe and XLt: American Bureau of Shipping (ABS) Product Design Assessed (PDA). All OCS Controllers are CE marked and most are UL Class 1, Division II ABCD & C-UL Listed (or equivalent).                                   |                       |   |
|  | Equivalent Wash Down Rating                                      | All OCS Controllers are suitable for IP65 and NEMA12 Applications. Most OCS Controllers are also suitable for NEMA4 and NEMA4X applications. Contact the Horner APG Factory for recommendations in Wash Down applications. |                       |   |
|  | Extended Operating Environment                                   | Many OCS controllers can be provided with Extending Operating Temperatures in some cases from -40° to 60° C - please contact us for more details   |                       |   |



| XL6  |                    | XL6e | XL7  | XL10   |
|--|--------------------|------|--|--|
| 320 x 240  |                    |      | 800x480                                      | 640x480                                      |
| 5.7" TFT, 32000 colours  |                    |      | 7" WVGA TFT, 65000 colours                   | 10.4" VGA TFT, 32000 colours                 |
| selectable fonts   |                    |      | selectable fonts                             | selectable fonts                             |
| 1023   |                    |      | 1023   | 1023   |
| 100  |                    |      | 1023   | 300  |
| 6  |                    |      | 6  | 8  |
| 5  |                    |      | 5  | 7  |
| pop-up keypad  |                    |      | pop-up keypad                                | pop-up keypad                                |
| yes  |                    |      | yes  | yes  |
| 256kB  |                    |      | 1MB  | 256kB  |
| 32kB   |                    |      | 32kB   | 32kB   |
| 0.2ms/k  |                    |      | 0.013ms/k                                    | 0.2ms/k                                      |
| microSD (Transflash)   |                    |      | microSD (Transflash)                         | microSD (Transflash)                         |
| yes  |                    |      | yes  | yes  |
| yes  |                    |      | yes  | yes  |
| yes  |                    |      | yes  | yes  |
| yes  |                    |      | yes  | yes  |
| yes  |                    |      | yes  | yes  |
| yes  |                    |      | yes  | yes  |
| yes  |                    |      | yes  | yes  |
| 2048/2048  |                    |      | 2048/2048                                    | 2048/2048                                    |
| 512/512  |                    |      | 512/512                                      | 512/512                                      |
| 9999   |                    |      | 49999  | 9999   |
| 4096   |                    |      | 32,768                                       | 4096   |
| 2  |                    |      | 3  | 2  |
| each port RS-232 or RS-485   |                    |      | RS-232 & RS-485;RS-232/RS-485                | each port RS-232 or RS-485                   |
| yes  |                    |      | yes  | yes  |
| yes  |                    |      | yes  | yes  |
| yes  |                    |      | yes  | yes  |
| yes  |                    |      | yes  | yes  |
| standard   |                    |      | standard (2 Ports)                           | standard                                     |
| 1800m  |                    |      | 1800m  | 1800m  |
| yes  |                    |      | yes  | yes  |
| yes  |                    |      | yes  | yes  |
| HE-XEC   | Standard           |      | Standard (2 Ports)                           | Standard                                     |
| via EnvisionRV   | HTTP or EnvisionRV |      | HTTP or EnvisionRV                           | HTTP or EnvisionRV                           |
| via Envision FX  | FTP or EnvisionFX  |      | FTP or EnvisionFX                            | FTP or EnvisionFX                            |
| 143.6mm (5.65")  |                    |      | 143.8mm (5.66")                              | 230.6mm (9.08")                              |
| 186.1mm (7.33")  |                    |      | 210.1mm (8.27")                              | 303.3mm (11.94")                             |
| 71.45mm (2.813")   |                    |      | 69.1mm (2.72")                               | 61.7mm (2.43")                               |
| Communications Option adds 13mm (0.5") depth   |                    |      | Communications Option adds 13mm (0.5") depth | Communications Option adds 13mm (0.5") depth |
| -10 to 60°C  |                    |      | -10 to 60°C                                  | -10 to 60°C                                  |
| 5 to 95% non-condensing  |                    |      |  |  |
| XLe and XLt: American Bureau of Shipping (ABS) Product Design Assessed (PDA). All OCS Controllers are CE marked and most are UL Class 1, Division II ABCD & C-UL Listed (or equivalent).                                   |                    |      |  |  |
| All OCS Controllers are suitable for IP65 and NEMA12 Applications. Most OCS Controllers are also suitable for NEMA4 and NEMA4X applications. Contact the Horner APG Factory for recommendations in Wash Down applications. |                    |      |  |  |
| Many OCS controllers can be provided with Extending Operating Temperatures in some cases from -40° to 60° C - please contact us for more details   |                    |      |  |  |



## **HORNER IRELAND LTD. (EUROPE)**

Unit 1 Centrepark, Centrepark Road  
Cork, Ireland  
P +353-21-4321266  
info@horner-apg.com  
www.horner-apg.com

### **GLOBAL HEADQUARTERS**

59 S. State Ave.  
Indianapolis, Indiana 46201  
P 317-916-4274  
F 317-639-4279  
TF 877-665-5666  
www.heapg.com  
sales@heapg.com

### **HORNER CANADA**

Suite 200, 5970 Centre Street SE  
Calgary, Alberta T2H OC1  
P (403) 444-0928  
F (403) 265-0966  
info@hornercanada.com  
www.hornercanada.com

### **HORNER ENG. INDIA PVT. LTD.**

Vaishnavi, No. 3, Domlur 2nd Stage  
3rd Phase, Domlur Main Rd.  
Bangalore 560071  
Karnataka, India  
P +91-80-41263460 / 61 / 62  
F +91-80-41263464  
Email: info@india.horner-apg.com

### **HORNER AUSTRALIA PTY LTD**

Unit 15  
104 Ferntree Gully Road  
Oakleigh Victoria 3166  
P 03 9544 0733  
F 03 9544 0977  
jim.callan@heapg.com

### **HORNER (TIANJIN) AUTOMATION TECH LTD. (CHINA)**

Sales and Technical Support for China  
Room 1001, Nongke Building  
No. 268, Baidilu Road, Nankai District  
Tianjin 300192, P.R. China  
P +86-022-23367571/23360759  
F +86-022-23662715  
info@hornerchina.com.cn  
www.hornerchina.com.cn

### **BRASIL SOLUÇÕES EM AUTOMAÇÃO LTDA. (BRAZIL)**

Sales and Technical Support for South America  
Rua Primeiro de Março  
708 sala 401 – Centro  
93010-210 – São Leopoldo – RS Brazil  
P +55 51.3037.4274  
F +55 51.3037.4272  
info@hornerbrasil.com.br  
www.hornerbrasil.com.br



©Copyright 2013, Horner APG. Cscape, SmartStack, SmartStix, SmartMod, and CsCAN are registered trademarks of Horner APG, Windows is a registered trademark of Microsoft Corporation. PROFIBUS-DP is a registered trademark of Siemens AG. DeviceNet is a registered trademark of Open DeviceNet Vendor Association (ODVA), Inc. CANopen is a registered trademark of CAN in Automation. All other trademarks are registered and are the property of their respective owners.

