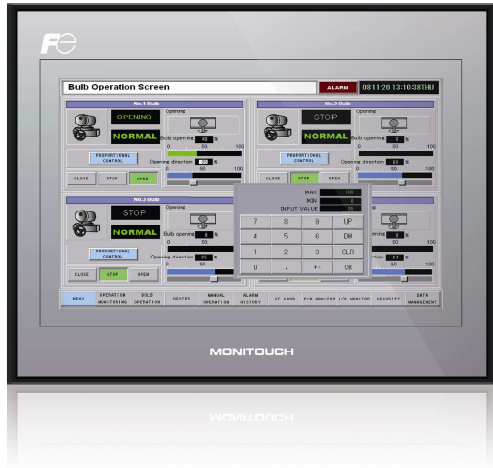


MONITOUCH

TechnoShot series



TS1100 series

10.2 inches	WVGA	64K Colors	TFT
LED Backlight	3ch Serial (D-sub9x2)	Master/Slave USB	Ethernet

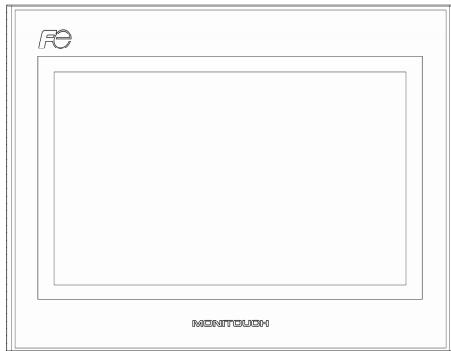
- 65,536-color display with wide-resolution and high-brightness
- 8-way communication with up to eight kinds of devices
- Two types of USB interfaces fitted as standard feature

■ Specifications

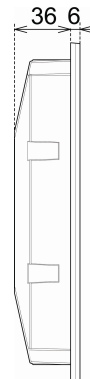
Model		TS1100i	TS1100
Display	Display size	10.2" Wide	
	Resolution	800 x 480 dots	
	Display device	TFT	
	Colors	65,536	
	Backlight	LED	
	Luminance	350 cd/m ²	
Touch switch	Analog resistance film		
Memory	FROM	11.6 MB	
	SRAM	128 KB	
External interface	Serial	COM1	RS-422/485, Asynchronous, Data length: 7,8 bits, Parity: even/odd/none, Stop bit: 1,2 bits Baud rate: 4800/9600/19200/38400/76800/115200/187500 bps
		COM2 & COM3	RS-232C, Asynchronous, Data length: 7,8 bits, Parity: even/odd/none, Stop bit: 1,2 bits Baud rate: 4800/9600/19200/38400/115200 bps
	Ethernet		100BASE-TX/10BASE-T
	USB (Type A)		1 port (Ver. 2.0)
	USB (Type mini B)		1 port (Ver. 2.0)
Clock	Battery	Coin-type lithium primary battery	
	Calendar accuracy	Gap±90 sec. per month (Ambient temperature 25 °C)	
Power supply	Permissible range of voltage	DC 24 V ± 10 %	
	Demand (maximum rating)	16 W or less	
Physical environment	Ambient operating temperature	0-50 °C	
	Ambient storage temperature	-10-60 °C	
	Relative humidity	85 % (RH) or less (without dew condensation, Max. wet bulb temperature:39 °C or less)	
	Operation altitude	2,000 meters or less	
	Operation atmosphere	Not exposed to corrosive gas or excessive dust (free of conductive dust)	
	Contamination level	Level 2	
Installation conditions	Dimensions W x H x D	283 x 221 x 42 mm	
	Panel cutout W x H	257 x 199 mm	
	Protect structure	Front panel:Compatible with IP65 (when waterproof gasket is used.),Rear cover:Compatible with IP20 Form:Single unit, Installation method:Panel mounting	
Case color	Black		
Compatibility	CE, KC		

■ External Dimensions (Unit: mm)

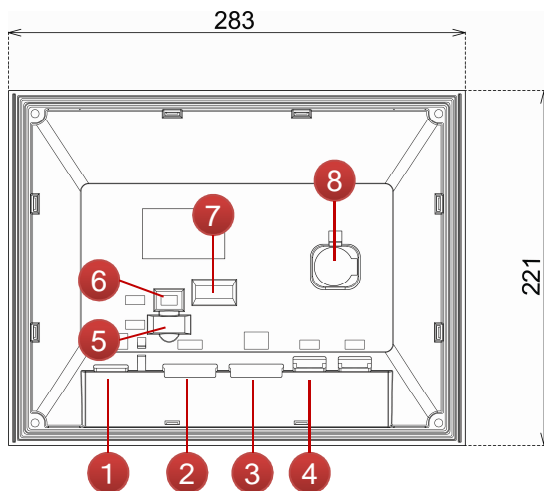
Front view



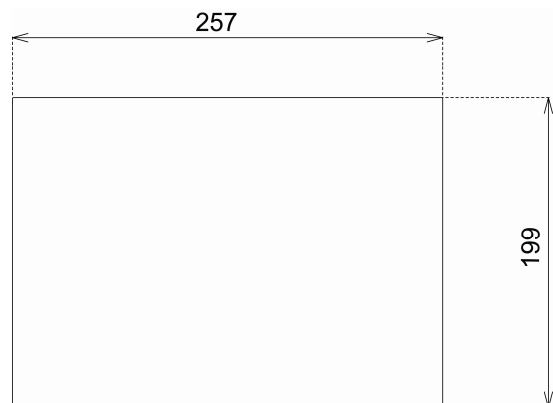
Side view



Rear view



Panel cutout



■ Part Names

- | | |
|---|-------------------------|
| ① Power supply | ⑤ USB I/F (Type A) |
| ② D-sub 9-pin for serial port (COM1) | ⑥ USB I/F (Type mini B) |
| ③ D-sub 9-pin for serial port (COM2/COM3) | ⑦ DIP switches |
| ④ 100BASE-TX/10BASE-T port (LAN) | ⑧ Battery |

TS1100 models

TS1100 □ ——— (Functional specifications) N/A : Without built-in LAN port
i : With built-in LAN port

Hakko Electronics Co., Ltd.

Overseas Sales Department

238 Kamikashiwano-machi, Hakusan-shi, Ishikawa 924-0035, Japan

Tel: +81-76-274-2144

Fax: +81-76-274-5136

E-mail: sales@hakko-elec.co.jp

www.monitouch.com