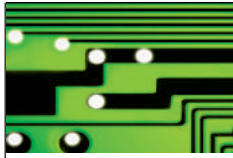


escodrives.com

Frequency inverter **Series S3 IP66**

For Power Rating from 0,4 - 7,5 kW



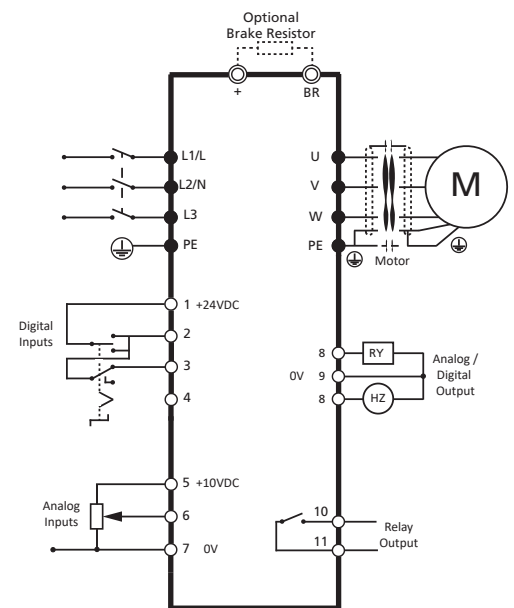
Technical Data ED-S3 (Protection class IP66)																
Model		200V - 240V 1 Phase Input				200V - 240V 3 Phase Input					380 - 480V 3 Phase Input					
Power Rating [kW]		0,37	0,75	1,5	2,2	0,37	0,75	1,5	2,2	4	0,75	1,5	2,2	4,0	5,5	7,5
Output Current [A]		2,3	4,3	7,0	10,5	2,3	4,3	7,0	10,5	18,0	2,2	4,1	5,8	9,5	14,0	18,0
Supply Voltage, Supply Frequency		1 Ph. 200V ... 240V (+10%), 50/60Hz (±5%),				3 Ph. 200V ... 240V (+10%), 50/60Hz (±5%),					3 Ph. 380V ... 480V (+10%), 50/60Hz (±5%),					
Output Voltage		0.0V to Max. input voltage														
Overload Capacity		150% for 60s, 175% for 2,5s														
Output Frequency		0 ... 500Hz (resolution 0,1Hz)														
Programming	Keypad	Integrated keypad as standard, optional remote control panels														
	Display	7 Segment LED														
	PC Software	escodrive Tools														
Controller Specification	Control Method	Linear V/F characteristic, energy saving function, sensorless vector control for all Motor Types (IM, PM, BLDC; SynRM, LSPM)														
	PWM Carrier Frequency	4-32kHz Effective														
	Stopping Mode	Ramp to stop: User Adjustable 0,1 - 600 secs, Coast to stop														
	Braking Chopper					integr.		integrated			integrated					
	Skip Frequency	individually adjustable incl. Hysteresis														
	Setpoint Control	Analog	0 - 10V, 10 - 0V; 0 - 20mA, 20 - 0mA; 4 - 20mA, 20 - 4mA													
	Digital	Motorised Potentiometer, Keypad, Modbus RTU, CANopen, EtherNet/IP														
I / O Specification	Power Supply	24VDC (100mA), Short Circuit Protected, 10VDC (10mA) for Potentiometer														
	Programmable Inputs	4 Total, 2 x Digital, 2 x Analog / Digital selectable														
	Digital Inputs	8 - 30 VDC internal or external supply, Response time <4ms														
	Analog Inputs	Resolution: 12 bits, Response time: <4ms, Accuracy: ±2% full scale, Parameter adjustable scaling and offset														
	Programmable Outputs	2 Total, 1 x Analog / Digital, 1 Relay														
	Relay Outputs	Maximum Voltage: 250VAC / 6A; 30VDC / 5A; optionally expandable														
	Analog Outputs	0 ... 10V, max. 20mA														
EMC Filter	Integrated (IEC 61800-3 Cat. C1)															
Safety functions	Fire Mode (NO/NC) Selectable Speed Setpoint (Fixed / PI / Analog / Fieldbus), Emergency stop, Quick stop															
Protection Class	IP66															
Ambient Conditions	Storage Temperature: -40°C to +60°C; Operating: -10°C to +40°C; Humidity: 95% Max, non condensing															
Conformance	CE, cULus, RCM															

Dimensions and Weight

Model		Dimension (mm) W x H x D			Weight (kg)
200V - 240V 1-phase	EDS3S-2004PL-66S	161	232	179	3,1
	EDS3S-2007PL-66S	161	232	179	3,1
	EDS3S-2015PL-66S	161	232	179	3,1
	EDS3S-2022PL-66S	188	257	187	4,1
200V - 240V 3-phase	EDS3-2004PM-66S	161	232	179	3,1
	EDS3-2007PM-66S	161	232	179	3,1
	EDS3-2015PM-66S	188	257	187	4,1
	EDS3-2022PM-66S	188	257	187	4,1
	EDS3-2037PM-66S	210,5	310	252	7,6
380V - 480V 3-phase	EDS3-4007PL-66S	161	232	179	3,1
	EDS3-4015PL-66S	161	232	179	3,1
	EDS3-4022PL-66S	188	257	187	4,1
	EDS3-4037PL-66S	188	257	187	4,1
	EDS3-4055PL-66S	210,5	310	252	7,6
	EDS3-4075PL-66S	210,5	310	252	7,6



Switch example (depending on model)



(For double Inputs and Outputs, the requested function is adjustable via parameters)